



The Charolais Pavilion,
Avenue M,
Stoneleigh Park, Kenilworth,
Warwickshire, CV8 2RG
t: 024 76 697731
f: 024 76 697776
www.rugbyfarmersmart.com
Holding No. 43-139-8013

Office Hours: Monday to Friday – 9.00am to 5.00pm
Opening Time: Gates open at 5.30am until further notice

Market Reports For Monday 18th April 2016

Market At A Glance

Prime Steers to 188p/kg & £1,329
Prime Heifers to 194p/kg & £1,135
Prime Bulls to 172p/kg & £1,001
Spring Lamb to 243p/kg & £98
Spring Lamb SQQ 224p/kg
Hoggs to 223p/kg & £111
Hogg SQQ to 194.2p/kg
Cull Ewes to £139
Calves to £265

**FRIDAY 22ND APRIL
APRIL FAIR OF STORE CATTLE
PLUS SALE OF EWES WITH LAMBS AT FOOT**

Catalogues & Entry Forms available by post, email or on the website
www.rugbyfarmersmart.com ~ admin@rugbyfarmersmart.com

CATTLE: 45 forward

Prime Cattle : 36 forward

The Sector is in disarray. Trade today for the better end goods as good as any alternative but those missing the mark simply unwanted at any price.

Steers to £1330 and 188p/kg with weight from N F Hodges, Aylesbury whilst Heart of England showed 15 month old Limousins at 186p/kg and £1204. Heavy Black and Whites to 134p/kg

Heifers as ever wanted but only the goods. Top 194 and 192p/kg from Parry Walters returning £1135.

Auctioneer: Tom Wrench

STEERS: 19			
Top prices per head			
British Blue x	707 kgs	£1,329.16	NF Hodges & Son
Limousin x	647 kgs	£1,203.42	Heart of England Farms
Limousin x	656 kgs	£1,180.80	Heart of England Farms
Limousin x	650 kgs	£1,170.00	AEJ & FJ Claridge
Limousin x	680 kgs	£1,156.00	JW & BE &PW Semple
Top prices per kilo			
British Blue x	707 kgs	188 p/kg	NF Hodges & Son
Limousin x	647 kgs	186 p/kg	Heart of England Farms
Limousin x	650 kgs	180 p/kg	AEJ & FJ Claridge
Limousin x	656 kgs	180 p/kg	Heart of England Farms
Limousin x	680 kgs	170 p/kg	JW & PE & PW Semple

HEIFERS: 17			
Top prices per head			
Limousin x	610 kgs	£1,134.60	DTP & PA Walters
Limousin x	564 kgs	£1,094.16	DTP & PA Walters
Limousin x	569 kgs	£1,092.48	DTP & PA Walters
Charolais x	605 kgs	£1,076.90	AEJ & FJ Claridge
Simmental x	670 kgs	£951.40	RC Thurgood & Sons
Top prices per kilo			
Limousin x	564 kgs	194 p/kg	DTP & PA Walters
Limousin x	569 kgs	192 p/kg	DTP & PA Walters
Limousin x	610 kgs	186 p/kg	DTP & PA Walters
Charolais x	605 kgs	178 p/kg	AEJ & FJ Claridge
Blonde x	499 kgs	160 p/kg	AJ Bickford

Bulls : 3 forward

Bulls, just a few but the Holsteins looking a marvellous trade and a Limousin at 172p/kg by far the dearest beast through the ring.

Auctioneer: Tom Wrench

Calves : 1 forward

Juts the one calf forward today, a smart 3 week old Aberdeen Angus x Heifer to meet a strong trade, realising £265.

Auctioneer: Tom Wrench

SHEEP: 2,259 forward

Prime Hogs: 1,677 forward SQQ 194.2p/kg

Fast drops all last week but parity restored over the weekend and in these aisles again today with an SQQ equal on the week of 194p/kg and 10p plus, more than the mid-week sales last week. Truthfully a yarding of two halves with quality meated Hogs much demanded but far too many lean and under spec. It is essential Hogs hold cover at marketing. In the Euro Spec a top today for R W H Fenemore with 39kg Beltex at 223p/kg whilst T E Payne & Son 220p/kg for 35kg Beltex and 39kg Texels from Richard Heckford 212p/kg. 255 Hogs today trading over 200p/kg. In the heavies a top p/kg of 204p/kg for Messrs C J Whitehead, Stowe selling 46.5kg at 204p/kg for Beltex whilst G Curtis saw 47kg Charollais at 200p/kg. In the lump Euro spec sold to £91 for 44kg Texels from John Eadon whilst R & B Smith saw equal money for 45kg and S Deeming £90.50 for 45kg Texels. Overall £111 twice for Messrs Foster, Ettington at 64 and 74 kg whilst TC & CA Harding £107 for Suffolks at 70kg. Messrs Smith, Randell, Leadbeater and WH & IM Butcher and D Mitchell all breaking the £100 mark today and some on various occasions.

Auctioneer: Tom Wrench

Prime Hogs: 1,677 SQQ (194.2p/kg)			
Per kilo - EURO under 45.5kg			
Beltex x	39.00 kgs	223 p/kg	RWH Fenemore & Son
Beltex x	35.00 kgs	220 p/kg	TE Payne & Son
Charollais x	39.00 kgs	212 p/kg	RJ Heckford
Beltex x	35.00 kgs	211 p/kg	AN Calcott & Son
Beltex x	40.00 kgs	211 p/kg	D Stilgoe
Per head			
Texel x	44.00 kgs	£91.00	HW & AJ Eadon & Son
Texel x	45.00 kgs	£91.00	R & B Smith
Texel x	45.00 kgs	£90.50	SF & AJ Deeming
Charollais x	45.00 kgs	£88.00	HW & AJ Eadon & Son
Beltex x	39.00 kgs	£87.00	RWH Fenemore & Son

Per kilo - HEAVIES 45.5kgs plus			
Beltex x	46.50 kgs	204 p/kg	CJ Whitehead & Son
Charollais x	47.00 kgs	200 p/kg	G Curtis & Son
Texel x	53.00 kgs	198 p/kg	DJ & BL Leadbeater
Charollais x	46.50 kgs	198 p/kg	H & J East
Charollais x	47.00 kgs	197 p/kg	RA Deeley
Per head			
Texel x	64.00 kgs	£111.00	NJ Foster
Texel x	74.00 kgs	£111.00	NJ Foster
Suffolk x	70.00 kgs	£107.00	TC & CA Harding
Blue Texel x	66.00 kgs	£106.00	R & B Smith
Texel x	53.00 kgs	£105.00	DJ & BJ Leadbeater

Spring Lambs: 125 forward SQQ 224p/kg

A few about but most showing the weather. A limited audience for the lambs yet and many firms not killing lambs for a week or two yet. Vendors please note lambs ideally wanted under 41kg at the moment and many today too heavy to handle at the consumer end. Top 243p/kg for Dave Mitchells Texels at 37kg. Whilst R Taylor had 239p/kg for 38kg Texels and P Jarrom 238p/kg for 40kg. Top lump £98 for R & B Smith Dorsets at 48kg.

Auctioneer: Tom Wrench

Store Hogs : 78 forward

A good number forward, for this late in the season, with some quality amongst the pens. Top today £81.50 for Charollais from D Stilgoe. Short keep lambs all over £74. A smart pen of 16 Suffolk lambs to £77 from R Baker. Mid keep lambs £60-£70, only very long keep under. If you have lambs left to sell, take advantage of the trade.

Auctioneer: Tom Wrench

Breeding Sheep : 30 forward

Some smart runs of Ewes and lambs forward today, with a top of £73 per life or £146 per family for 6 Suffolk x Ewe lambs with single lambs at foot from RJ Wright. All pens of Ewes and lambs trading over £50 per life today.

Auctioneer: Tom Wrench

Cull Ewes : 350 forward

A few less about at just 350 and quality a lot less than past weeks but yet an average of £83 represents another swift trade. Heavy Ewes just as swift although lesser quality killing Mules £5 down on the week. Top today for young Harry Butcher with Texels at £139. Suffolks from TC & CA Harding £121 and Messrs Leadbeater £120 for a pen of Texels. R Long £115 for Texel pairs and T E Payne & Son £115 for Beltex. Cheviots to £96 and David Collett top Mule at £91. Ewes continue to be wanted but likely to fall in trade over coming weeks.

Auctioneer: Tom Wrench

Cull Ewes & Rams: 350 forward					
Texel	£139.00	H Butcher	Suffolk	£112.00	TC & CA Harding
Suffolk	£121.00	TC & CA Harding	Beltex	£108.00	D Mitchell
Texel	£120.00	DJ & BJ Leadbeater	Suffolk	£104.00	TC & CA Harding
Texel	£115.00	R Long	Cross red	£104.00	D Mitchell
Beltex	£115.00	TE Payne & Son	Cross bred	£102.00	BT Caswell & Son

FOR SALE

Registered Pedigree Aberdeen Angus Bulls
Well bred, TB tested and ready to work
Call 07582 369674

FOR SALE

Working Collie Puppies
Parents work both cattle and sheep
Ready end of April, £150 dogs and bitches available
07867 988364

FOR SALE

Pedigree Charolais Bulls
Ready to work, TB4 Member of HI Health, Not been pushed
Call Graham on 07860 765338

FOR SALE

Ford Ranger Thunder 2.5 Diesel
100,000 miles, MOT 25th November 2016
£6,000
Call 07979 646731 Lutterworth
(Leave a message if no answer)

FOR SALE

Barn stored straw
Call 01926 817249

FOR SALE

Pedigree Saler Bull
35 months old
Call 07850 818850

NORTHANTS LAND DRAINAGE CONTRACTORS LTD

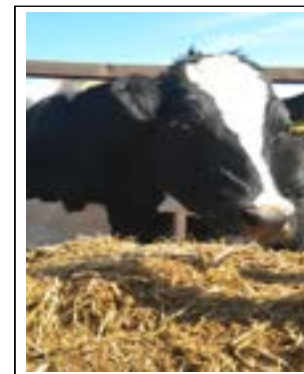
Althorpe Park Station
East Haddon
Northamptonshire. NN6 8DH

TRENCHING SPECIALISTS



Trench Excavations from 100mm to 500mm width
Laser Control on all Machines
Civil Engineering Contracts
All Types of Fencing
Road Drainage
Slurry Lagoons
Bulk Excavation & Site Clearance
Plastic, Clay & Concrete Pipes Laid

Tel: 01604 770410 / 770320 Fax: 770406



**FINISHING CATTLE?
GROWING CATTLE?
FEEDING SHEEP?**



**DO YOU WANT
HIGH PERFORMANCE
COST EFFECTIVE
FULLY ASSURED
AND
COMPLETE FEEDS?**

THEN CONTACT
BERRYSTOCK FEEDS
TEL: 01788 890320
E-MAIL: john@berryfieldsfarm.co.uk
www.berrystockfeeds.co.uk

BERRYFIELDS FARM
DAVENTRY
NN11 8NP



J & B Gray
Pailton Pastures
Pailton
Rugby
CV23 0QN
store@jbgrayfarming.co.uk
07973 159903 / 01788 832652

Your local family run grain storage solution whether it be long term/ short term/ full loads/ part loads.

Also available – whole farm (stubble to stubble) contracting operations.
GPS controlled Spraying and Fertiliser application.

Farm Insurance Specialists

Call 01865 844994
Visit www.county-insurance.co.uk



County Insurance Services
County House, Dvina Court, London
Lane, Welwyn, Hertfordshire, SG13 2JF. County Insurance Services is
a limited and regulated by the Financial Services Authority (FSA)

MIDLAND FEED SERVICES LTD

“ Quality Feed at Competitive Prices ”

Midland Feed Services Ltd provides a complete on-farm milling and mixing service. Rations can be varied from week to week and are precisely mixed to suit your animals - throughout their lifecycle. Our fleet of eight vehicles operates across the midlands and we are trusted for our friendly and reliable service.

FEED FLEXIBILITY OPTIMIZES PROFITABILITY

- Rolled or ground
- Bulk or bagged
- Custom mixes
- Rations for all livestock
- Free nutritional back-up
- Analysis service available
- Weekly service in your area
- All types of bale processed
- Roughage processed for bedding
- Utilised straights and by-products
- Minerals and concentrates
- Sucked, blown and augered
- Liquid molasses
- Large or small quantities
- Variations to seasonal needs

Call us to discuss your requirements.

T: 01789 205391 / 266503

DAIRY BEEF PIG SHEEP HORSE



www.midlandfeed.co.uk



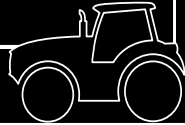
Your local, independent farm fuels, heating oil & lubricants supplier.

**Proud to be supporting
The Rugby Farmers Market**

01675 437557 | midlands@rix.co.uk | www.rix.co.uk

Rix Petroleum @rixpetroleum

FARM INSURANCE WHERE YOUR OFFICE IS OUR OFFICE



We believe it's better to take the time meeting face to face on a farm, not around a desk.

Call 02476 444519 for a quote or pop in
NFU Office, Meridian House , 6 Eastwood
Business Village, Harry Weston Road, Binley
Business Park, Coventry, Warwickshire CV3 2UB



NFU Mutual
INSURANCE | PENSIONS | INVESTMENTS

It's about time®

Agent of The National Farmers Union Mutual Insurance Society Limited. For security and training purposes, telephone calls may be recorded and monitored.

Tom Reeve Contracting

Agricultural, Commercial & Domestic Fencing



For all your fencing needs.
Post and Rails,
Stock Fencing,
Panel Fencing,
Close board Fencing,
HLS/ELS Fencing,
Hedge Coppicing,
Tree and Hedge planting,
& Much More.

Always happy to quote.



For more information or to contact Tom on;
01926 814731 or 07807 693858
tom.reeve@aol.co.uk
Also for Slot seeding, (Pasture improvement).
Opico slitter for pasture de-compaction.

T A R H I R E

FOR HIRE

10 TON REAR DISCHARGE MUCKSPREADERS WITH SLURRY DOORS
12 TON TRAILERS WITH HYDRAULIC DOORS

CONTRACT

MUCK SPREADING SERVICE
ADAPTABLE TO CUSTOMER NEEDS

ROB DAWKINS (DAVENTRY) – 07801 791212
ALAN CRAWLEY (HINCKLEY) – 07802 951179
OFFICE – 01327 340367



Rugby Farmers Mart Ltd

The Midlands Market owned and run by farmers at the
National Agricultural Centre, Stoneleigh Park, Kenilworth
~ THE HOME OF AGRICULTURE ~

2016 Calendar

JANUARY	Monday 25th	Sale of Store Cattle
FEBRUARY	Monday 8th	Sale of Store Cattle
	Monday 22nd	Sale of Store Cattle
MARCH	Monday 7th	Sale of Store Cattle
	Friday 18th	Sale of Store Cattle
APRIL	Monday 4th	Sale of Store Cattle
	Monday 11th	Spring Lamb Show & Sale sponsored by NSA
	Friday 22nd	April Fair of Store Cattle Plus Sale of Ewes with lambs at foot
MAY	Monday 9th	Sale of Store Cattle
	Saturday 14th	Reserved for Breeding Cattle & Shorthorn Sale
	Monday 23rd	Sale of Store Cattle
JUNE	Saturday 4th	Kenilworth Show
	Monday 6th	Sale of Store Cattle
	Monday 27th	Sale of Store Cattle
JULY	6th & 7th	Livestock Event @ NEC
	Monday 18th	Sale of Store Cattle
	Friday 29th	First Annual Breeding Sheep Fair

Rugby Farmers Mart Ltd

The Charolais Pavilion, Avenue M, Stoneleigh Park,
Kenilworth, Warwickshire, CV8 2RG

t: 02476 697731 m: 07774 723758 f: 02476 697776

e: admin@rugbyfarmersmart.com web: www.rugbyfarmersmart.com



Rugby Farmers Mart Ltd

The Midlands Market owned and run by farmers at the
National Agricultural Centre, Stoneleigh Park, Kenilworth
~ THE HOME OF AGRICULTURE ~

2016 Calendar

AUGUST	Monday 15th	Sale of Store Cattle
	Friday 19th	Suffolk Day including the Suffolk Ewe Lamb Show & Sale
	Friday 26th	Breeding Sheep Fair including Show & Sale of NCM Theaves & The NSA Ram Sale
SEPTEMBER	Saturday 17th	Wiltshire Horn & Lleyn Show & Sale
	Monday 19th	Sale of Store Cattle
	Friday 23rd	Annual Ram Fair Including Breeding & Store Sheep
OCTOBER	Monday 3rd	Final Sale of Breeding Sheep
	Friday 14th	1st October Store Cattle Fair
	Friday 21st	2nd October Store Cattle Fair
	Friday 28th	Suckled Calf Show & Sale
NOVEMBER	Friday 11th	1st Martinmas Store Cattle Fair
	Friday 25th	2nd Martinmas Store Cattle Fair
DECEMBER	Monday 5th	Christmas Primestock Show
	Monday 19th	December Fair of Store Cattle
	Wednesday 21st	Evening Christmas Poultry Sale

- Prime & Cull Cattle, Prime Sheep, Store Sheep, Ewes & Calves sold every Monday
 - Regular Sales of Store & Breeding Cattle
 - Seasonal Sales of Breeding & Store Sheep
- Pedigree Dispersal & Breed Society Sales held throughout the year

Rugby Farmers Mart Ltd

Forthcoming Sales 2016

22nd April

April Fair of Store Cattle
Sale of Ewes with lambs at foot

9th May

Sale of Store Cattle

14th May

Breeding Cattle
including the Beef Shorthorn Sale

Vendors who are wishing to sell stock please feel
free to contact:

Tom Wrench - 07774 723758

Steve Martin - 07960 085950

who will gladly make
A FREE ON FARM VISIT & VALUATION